

THE RANCHER

PUBLICATION 83

JAN/FEB

2010



FROM YOUR BOARD:

The Board has approved a new legal process to collect HOA dues past 90 days delinquency.

The process will include termination of ...

**CABLE TV
ACCESS TO A/C
DISCONNECT TO WiFi**

Formal legal action will be pursued for those homeowners who persist in delinquency.

~~~~~  
submitted by Rich Olivo  
on behalf of Bord of Directors

## MANAGER'S REPORT:

### TAKE NOTICE:

THERE IS NO SMOKING OR ALCOHOLIC BEVERAGES, ALLOWED IN THE

ATHLETIC BUILDING,  
AND HOT TUB !!

ALSO, no alcoholic beverages passed through the restaurant area.

AND...no glass containers in the pool area.

~~~~~  
NOT MUCH SNOW, but
OH, THE COLD! One
reading was 25-below!

~~~~~  
WE THOUGHT WE HAD IT  
LICKED - BUT.....

The compactor has become an issue again...since a lot of homeowners are changing over to the new flat-screen LCD TV's.....

**DO NOT**  
put old TV's in the compactor. If you have an old TV for disposal please call Rich Olivo (1-970-627-0589)

## LETTER FROM

### "SASQUATCH ALARMS & COMMUNICATIONS"

Dear Homeowner:

I install alarm systems which can have detectors connected to sense freeze, water leaks, fire, CO gas, natural gas leaks, hot tub low or high temperature, and power outages. There are also burglary detectors to sense motion, door and window sensors, and glass breakage sensors. Optional modules may be added to control your heat remotely by phone or internet, control the alarm system remotely, or automatic water shut-off when a leak or freeze is detected.

All systems require a main control unit with a keypad, and then you add whatever type and quantity of sensors you would like. There are hardwired and wireless sensors available.

There are two monitoring options.

\* The first is to have the alarm call into a Central Station, which then calls the proper authorities and list of people you provide. There is a monthly fee for this service. You may use a phone line, high speed internet or a cellular signal to call the central station. The advantage of the Central Station is they are manned 24 hours, they have back-up computers and power generators, and they will keep calling till they contact someone.

\* The second is a voice dialer, which will call three phone numbers and play a pre-recorded message that an alarm has occurred. There is no monthly fee for this, but a phone line is required (a phone line is the only method for this option). The

dialer will only make three phone calls and you won't know if no one was reached.

Some insurance companies give a large discount on homeowner's insurance when you have an alarm system. Make sure to check what they require.

I've been installing alarm systems for over 20 years (11 years in Grand County). I can provide references if requested, Please don't hesitate to call with questions.

(970) 716-9898 voice

(970) 726-9868 FAX

mail to: P. O. Box 504

Fraser, CO. 80442

email:

scott@sasquatchelectrical.com

Thank you,

Scott Torello, President

submitted by: Rich Olivo

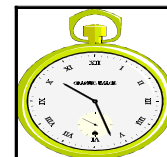
on behalf of Board of Dir.

## LETTER FROM TRAVELER'S INSURANCE COMPANY.

It is highly *encouraged* to install CO detectors in all units.

It is a **STATE LAW** to have CO detectors installed if you RENT OR HAVE YOUR UNIT UP FOR SALE!

Please contact the manager's office for further information.



**Daylite Savings  
March 14th**

## COMMITTEE MEMBERS

### Executive Committee:

Jim Blakley, Moderator  
Bob Smith, Bob Costello,  
Mark Lewis

### Financial:

Bob Costello, Moderator,  
Mark Lewis, Bob Smith

### Athletic Club Management:

Gary Trujillo, Moderator  
Bob Lang, Mark Lewis  
Denny Dressman

### Rules & Regulations:

Mark Baxley, Moderator  
Denny Dressman,  
Bob Lang

### Maintenance & Architect.

Bob Smith, Moderator  
Gary Windsor  
Rich Olivo

### SSR Master Water Assoc.

Gary Windsor, Moderator  
Rich Olivo, Bob Costello

Jean Claude Cavallera  
Managing Agent

Ph: (970) 627-8125  
FAX: (970) 627-9424

e-mail: jescr@comcast.net  
www.sodaspringsranch.com

## FYI:

The managing agent is looking into obtaining more information on commercial recycling options to provide recycling service for SSR. More on this is future publications.



## CALENDAR MARKERS

Jan.18 - MLK Day  
Feb. 2 - Ground Hog Day  
12 - Lincoln's Bdy.  
14 - Valentine's Day  
15 - President's Day  
22 - Washington's Bd  
Mar.14 - Daylite Savings  
17 - St. Pat's Day  
20 - Board Mtg.

JAN. - Stone = Garnet  
Flower= Carnation  
FEB. - Stone = Amethyst  
Flower= Violet

## REPRESENTATIVES:

Tract A - Court Club = Mark Baxley (303) 638-5052  
Tract B - Fishing Springs = Bob Costello (970) 627-3355  
Tract C & D - Meadowbrook = Jim Blakley (720) 203-5204  
Tract E - Meadows = Rich Olivo (970) 627-0589  
Tract F & G - Meadowview = Gary Windsor (970) 627-9477  
Tract F - Pine Ridge = Bob Lang = (302) 598-7919  
Tract H - Ranch Club = Gary Trujillo (303) 778-2320  
Tract SC- Soda Creek = Mark Lewis (303) 887-0070  
Tract TC- Tennis Cottages = Bob Smith (303) 791-6841

## EDITOR:

GERRY JOHNSTON  
5029 W. Maplewood Pl.  
Littleton, CO. 80123  
Hm: (303) 795-2125  
FAX: (303) 730-3866

9921 US Hwy. 34 - SPC 38  
Grand Lake, CO. 80447  
Condo (970) 627-3835  
e-mail: geejons@prodigy.net

## CRAZY CORNER

### EASY ENGLISH???

- 1.) The bandage was *wound* around the *wound*.
- 2.) The farm was used to *produce* produce.
- 3.) He could *lead* if he would get the *lead* out.
- 4.) There was a *row* among the oarsmen about how to *row*.
- 5.) They were too *close* to the door to *close* it.
- 6.) A seamstress and a *sewer* fell down into the *sewer* line.
- 7.) To help with planting, the farmer taught his *sow* to *sow*.
- 8.) The *wind* was too strong to *wind* the sail.
- 9.) Upon seeing the *tear* in the painting, I shed a *tear*.
- 10.) The insurance was *invalid* for the *invalid*.
- 11.) Since there is no time like the *present*, he thought it was time to *present* the *present*.
- 12.) We must *polish* the *Polish* furniture.
- 13.) I did not *object* to the *object*.

### LET'S FACE IT ---

English is a crazy language.

There is no egg in eggplant, nor ham in hamburger; neither apple nor pine in pineapple. English muffins weren't invented in England; or French fries in France. Sweetmeats are candies; while sweetbreads which aren't sweet, are meat.

If we explore the paradoxes of English, we find that quicksand can work slowly; boxing rings are square; and a guinea pig is neither from Guinea, nor is it a pig.

In what language do people recite at a play, and play at a recital? Ship by truck and send cargo by ship?

Have noses that run and feet that smell? **WHEW!**

P.S.



If love is blind, why is lingerie so popular?